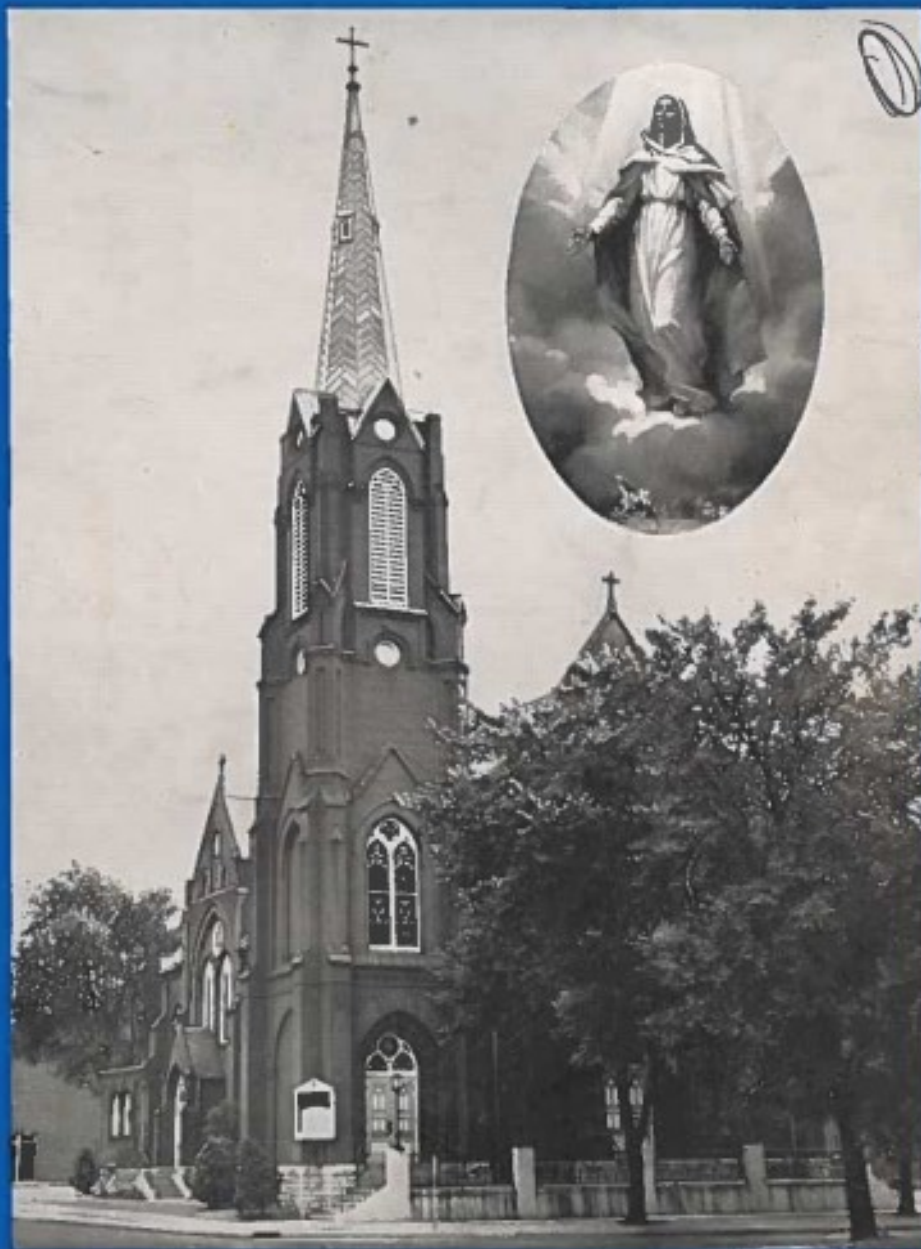


# CENTENNIAL

1857 - 1957

S  
t.  
M  
a  
r  
y,  
s  
P  
a  
r  
i  
s  
h



CENTRALIA, ILLINOIS

1857

1957

*100 Years*

**ST. MARY'S PARISH**

**Centralia, Illinois**

*Sunday, October 13, 1957*

**We Dedicate this Centennial Souvenir to the**

**Early Pioneers of St. Mary's Parish**

**TO HONOR** their memory and keep alive their Spirit of Sacrifice

**TO INSPIRE** the living with Renewed Confidence

**TO THANK** Almighty God and the Blessed Virgin Mary under  
whose patronage this parish has been placed and solemnly  
place the future in His merciful hands.



HIS HOLINESS, POPE PIUS XII



HIS EXCELLENCY, ALBERT R. ZUROWESTE, D.D.  
Bishop of Belleville

**F**ATHER Alphonse Bernard Schomaker was born April 11, 1908, to Martin Schomaker and Theresa nee Brockhoff, at Damiansville, Illinois.

Father Schomaker received his elementary education at St. Damian's School, Damiansville, Illinois. At the age of seventeen he enrolled at St. Meinrad Preparatory Seminary, St. Meinrad, Indiana, where he began his classical studies in preparation for the Holy Priesthood. He finished his theological course at Kenrick Seminary, Webster Groves, Missouri, and was ordained to the priesthood by the Most Reverend Henry J. Althoff, in St. Peter's Cathedral, Belleville, on June 10, 1934.

During the early years of his priesthood, Father was assistant pastor at the following parishes: St. Peter's Cathedral, Belleville; St. Mary's, Chester; Sacred Heart, East St. Louis; and at St. Mary's, Centralia. While assistant at Centralia, he began to organize the parish at Salem.

In 1940 Father became the first resident pastor of St. Theresa's, Salem. During his pastorate there the present rectory was purchased, the new St. Theresa's Church was built, and the property was acquired on which he erected St. Theresa's new school, convent and parish hall.

Attached to the parish at Salem was the mission parish of Kinmundy. In 1950 he built a new parish Church there.

In 1955, the Most Reverend Bishop named Father Schomaker pastor of Immaculate Conception Church, Columbia, Illinois. In August, 1955, after one year at Columbia, he became the pastor of St. Mary's parish, Centralia.





REVEREND A. B. SCHOMAKER  
Pastor



REVEREND RAYMOND CHARLES ORLET  
Assistant Pastor

# Pastors Who Have Served Our Parish

The following priests served St. Mary's Parish as pastors:

|  |   |   |   |
|--|---|---|---|
| Rev. Rudolph Helmerling  | - | - | October 26, 1857 until October 20, 1859   |
| It was Father Helmerling who first ministered to the Catholics of Centralia.<br>During his pastorate the parish was established. |   |   |   |
| Rev. Thomas Cusack   | - | - | November 24, 1859 until October 6, 1862   |
| Rev. John Vahey  | - | - | February 23, 1863 until August 4, 1863    |
| Father Vahey built the first rectory in Centralia, for the cost of \$400.00.<br>The original rectory was sold in 1901.           |   |   |   |
| Rev. John Mark   | - | - | August 24, 1863 until September 3, 1865   |
| Rev. Thomas Walsh  | - | - | February 5, 1865 until July 7, 1867       |
| During Father Walsh's pastorate the first school was constructed (1867)  |   |   |   |
| Rev. G. Mockenhaupt  | - | - | April 12, 1867 until June 7, 1868         |
| Rev. Charles Klocke  | - | - | August 2, 1868 until November 15, 1868    |
| Rev. P. Maly   | - | - | November 25, 1868 until August 1, 1869    |
| Rev. Theodore Wegmann  | - | - | November 1, 1869 until September 7, 1871  |
| Rev. Jacob Stremler  | - | - | February 8, 1872 until June 2, 1872       |
| Rev. J. Stick  | - | - | July 23, 1872 until September 22, 1872    |
| Rev. Herman Hegemann   | - | - | October 6, 1872 until August 2, 1876      |
| Rev. James Eckerle   | - | - | October 22, 1876 until July 11, 1881      |
| Rev. Philip Becker   | - | - | September 25, 1881 until January 26, 1896 |
| Rev. Otto Meier  | - | - | April 6, 1896 until August 18, 1903       |
| Rev. John Bruns  | - | - | August 23, 1903 until October 12, 1919    |
| Rev. Emil Chase  | - | - | November 2, 1919 until April 6, 1922      |
| Rev. C. J. Eschmann  | - | - | April 6, 1922 until August 5, 1924        |
| Rev. George Lohman   | - | - | August 5, 1924 until June 23, 1932        |
| Rev. Eugene J. Fix   | - | - | June 23, 1932 until June 9, 1953          |
| Rev. Fred M. Halbig  | - | - | August 13, 1953 until August 8, 1956      |
| Rev. A. B. Schomaker   | - | - | August 23, 1956                           |

The following priests served St. Mary's as assistant pastors:

|                       |                       |                           |
|-----------------------|-----------------------|---------------------------|
| Rev. Frank Kaiser     | Rev. A. B. Schomaker  | Rev. Leonard S. Goewert   |
| Rev. Francis Hodapp   | Rev. John O'Keefe     | Rev. Charles E. Kribs     |
| Rev. W. E. Hanagan    | Rev. John S. Walsh    | Rev. Robert G. Wesselmann |
| Rev. H. J. Fresse     | Rev. Jos. B. Stenger  | Rev. Edward J. Ratermann  |
| Rev. Charles Hovey    | Rev. Joseph Strzelec  | Rev. Ronald Glennon       |
| Rev. Vincent Tikuisis | Rev. Victor Sulkowski | Rev. Barry Jones          |
| Rev. Joseph Pico      | Rev. Michael Podrasky | Rev. Raymond C. Orlet     |
| Rev. Thomas Driscoll  | Rev. Stephen J. Boros |                           |



# History of the Parish

**M**IDWAY in the nineteenth century the undying challenge of Christ "to go into the whole world and make disciples of all men" was heeded once more in the northern section of Southern Illinois. Carrying on the glorious tradition of the Catholic Church, heroic priests turned their eyes toward Centralia. They saw there an infant flock waiting for a spiritual shepherd.

The city of Centralia came into existence with the advent of the Illinois Central Railroad in 1853. Scattered among the settlers brought here by the Illinois Central Construction was a group of Catholics. Because of their small number, the spiritual needs of this infant flock were ministered by visiting priests, and not by a resident pastor. From extant record we find that prominent among these early missionary priests was Father Rudolph Heimerling, who made regular trips from near-by Shoal Creek, (now Germantown) to minister to the needs of Centralia's Catholics. It was he who later probably became the first resident priest in Centralia.

Familiar to many present day members of our parish are the names of the early Catholic immigrants who followed the construction of the railroad. Among others, the following were the early Catholic settlers in our city: Thomas

Cummings, Daniel Delaney, Frank Dowd, Joseph Doyle, Martin Dwyer, John Jacob Egger, Jacob Garnier, Michael Gleeson, John Graney, William Green, Thomas Green, Sam Thompson, Thomas Whalen, Fredolin Spinner, Terrence Byrnes, Wm. Casson, Jacob Oswald, Nicholas Scheriger, Dennis Driscoll, Thomas Dougherty, Henry Vogt, Wendelin Spinner, Andrew Schoening, John Kaney, Henry Merkel, John Prendergast, John Zick, Conrad Bills, John Hold, Edward O'Conner, John Marsh, Joseph Friant, Louis Thouveneau, and John Hediger.



Sketch of First Church—1857  
The Bell Tower was added in 1879

Since there was no Catholic Church in Centralia during these early years, Father Heimerling

celebrated Holy Mass in the homes of native Catholics. Records show that the Holy Sacrifice was frequently offered in the homes of William Green in near-by Central City, and in the home of John Graney in Centralia.

During the administration of Father Heimerling, lots 9 and 10 in block 17 in the Original Town of Centralia were acquired. The first Church, a simple frame structure, was built on lot number 9, and was dedicated to Our Lady under the title of the Assumption. It was this Church which for many years served the needs of the faithful of Centralia and Central City. It had a seating capacity of one hundred, and

stood on the site of the present rectory. The cost of the building was about one thousand dollars. To this original structure a belfry was added in 1879. This modest building also served as a school for the parish from 1892 until 1899, when it was sold.

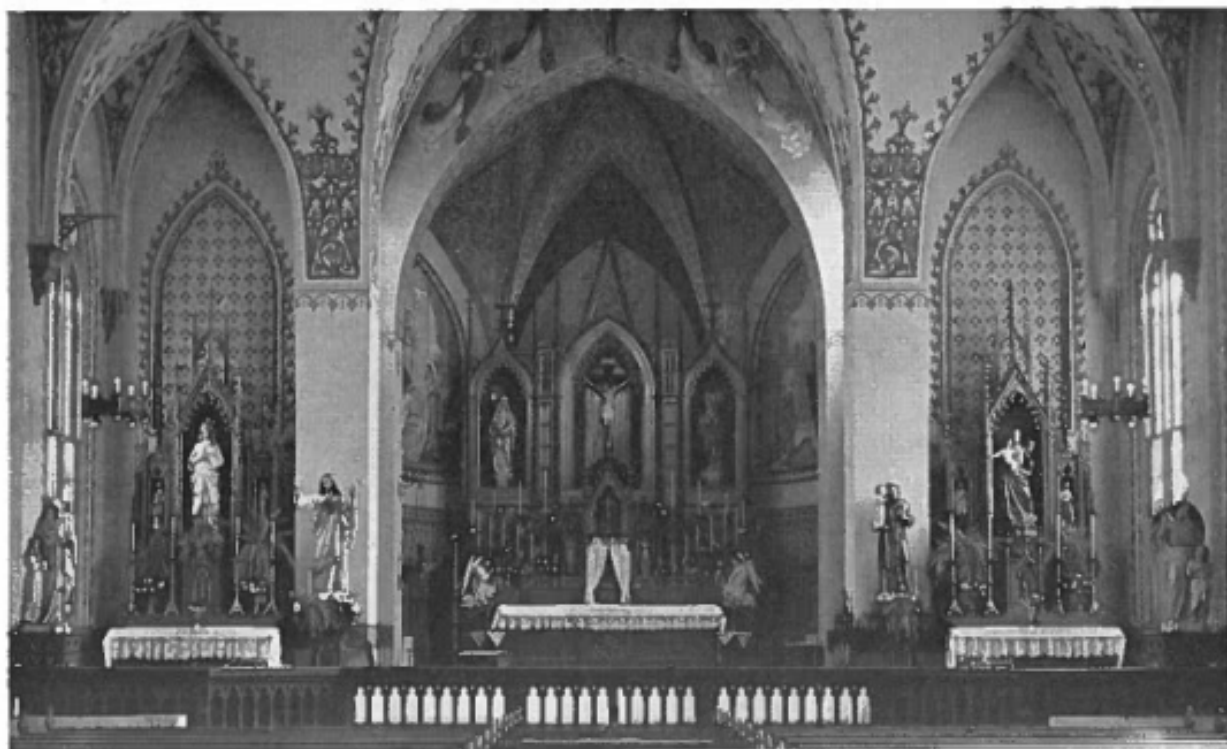
The site of the present Church, lot number 10, became parish property in 1859. As the parish grew in size, more parochial property became imperative. Accordingly, lots number 1, 2, 3 and 4 on the east side of the same block were acquired. They are occupied by the school, convent, playground and rental property today. Lot number 8 was also acquired, and is at present occupied by the custodian's home.

On the East side of block 17, St. Mary's holds title to all lots with the exception of lot No. 5. All of these are now devoted to the school, recreational facilities, and the Sisters' home.

The first recorded baptism is that of Sophie Reinhardt, October 5, 1857, administered by Father Heimerling. The first death in the parish occurred on December 27, 1857. The first recorded marriage was that of Matthew O'Brien and Anna Mason on Aug. 16, 1858.

It was not long, however, until the original Church proved inadequate. The steadily growing parish demanded better and larger facilities. On September 29, 1896, during the pastorate of Father P. J. Becker, the cornerstone for the new Church was laid. The humble frame Church, which had served the parish so faithfully for many years, now gave way to an imposing brick Church better suited to the needs of the expanding parish. The new gothic structure measured 111 by 41 feet. It accommodated some four hundred parishioners, and was constructed for about \$30,000.00.

The debt incurred by the necessity



Original Interior of Present St. Mary's Church



Present Day Sanctuary of St. Mary's Church

of the new Church weighed heavily on the struggling parish. However, through the zealous and tireless efforts of Father Otto Meier, who served St. Mary's as pastor from 1896 until 1903, the parish debt was greatly reduced.

In 1905 a steam heating plant was installed in the present Church. The interior was frescoed, new side altars and pews were added in 1907. Finally, a new pipe organ was obtained for about fifteen hundred dollars in 1916.

An assistant pastor was appointed to Centralia when the hospital facilities were enlarged during the pastorate of Father Chuse and Eschmann. He also assumed the responsibility of the two missions of Salem and Kinmundy which

were attached to St. Mary's. These missions were cared for by Centralia's assistant pastors until 1940 when the first resident pastor was appointed to Salem, who then assumed the care of the mission at Kinmundy.

A significant note in our history is that many early members of St. Mary's parish were immigrants. The flourishing mining industry was especially instrumental in bringing many Italians, Polish, Lithuanian and other European nationalities to our area. They settled, to a great extent, in Glenridge, then a part of our parish, and in Wamac.

Influential, too, on the history of St. Mary's parish was the discovery of oil in and around Centralia. Oil was

first produced in our midst in commercial quantities in 1936, and hit its peak in 1941-42. The oil industry brought many people to Centralia, from virtually every state in the union, but especially from the South and Southwestern part of the country. Among them were many fine Catholics who swelled the membership of our parish. Many are still among us today.

Dear to the heart of the faithful of St. Mary's is their love and devotion to the Blessed Mother. Ever mindful of her powerful intercession before the throne of her divine Son, it is a common and pleasing experience to see them kneel before her image.

Their loyal devotion to Mary culminated in the inauguration of the devotion to Our Mother of Perpetual Help. This devotion was established at St. Mary's by Father Emil Chuse who placed the first shrine in her honor in the Church in fulfillment of a promise made to Mary while he was serving as a chaplain in the Army with the A.E.F. We pray that this year of centennial will inspire all to rededicate their lives to Our Heavenly Mother whose patronage we joyfully claim.

\* \* \* \*

After nearly a half century of service, the Church began to show the ravages of time. The first renovation was carried out by the genial Father Eugene Fix. Among the many extensive improvements made by him were the complete water-proofing of the Church's exterior, and the replacing of the slate shingles of the lofty and beautiful spire of the Church with copper sheathing. He also refurbished the interior, enlarged the sanctuary, remodeled the altars, and put in padded kneelers for the comfort of the people.

When Father Fred Halbig was

was named pastor of St. Mary's in 1953, the Church again was in need of extensive repair. Therefore, he immediately undertook to task of renovating the Church and rectory. Because of the ever increasing needs of the parish, the balcony of the Church was extended to provide additional seating facilities. New pews were obtained; the old altars were replaced; new lighting was installed, and the entire interior of the Church was refinished and redecorated in attractive colors. And hidden away in the basement of the Church, making its presence felt only in the cold of winter and the heat of summer, is a new heating plant, and an air-conditioning system capable of producing the comfort of a 100 ton unit. This renovated edifice stands today as a testimonial to the zeal of the pastors of St. Mary's, and a living memorial to the loyalty and cooperation of her faithful.

The rectory, too, was completely remodeled. In 1951, Father Fix initiated the work, adding additional facilities to the old building. Father Halbig completed the entire work of renovation in 1956. Today the entire parish plant at Centralia is one of which its parishoners can be justly proud.

When Father Halbig passed to his eternal reward in August, 1956, the Most Reverend Bishop named Father A. B. Schomaker pastor of St. Mary's. He immediately assumed the manifold duties incumbent on the pastor of a thriving parish. With an eye to the future needs of the parish Father acquired title to additional property adjacent to St. Mary's convent in early June. Only this past summer our pastor engineered the complete renovation and restoration of the pipe organ in the Church. Under his zealous and vigilant guidance, St. Mary's continues to prosper and grow.



St. Mary's Convent

Thus, in this centennial year, St. Mary's reviews its century of growth. Its heart is filled with prayerful gratitude to Almighty God for the bountiful blessing He has showered upon it from its inception one hundred years ago. St. Mary's, too, remembers the loyal and zealous priests whose lives of sacrifice and love for their spiritual children were always an inspiration. With hearts brimming with love and gratitude on this centennial day, we pause to honor their treasured memory.

No historical account of a parish is complete without a tribute to its parishioners. Certainly St. Mary's stands today a living monument to the faith and loyalty of its people. There were times in its history which presented a trying challenge. Sacrifice, courage and generosity characterized our heroic

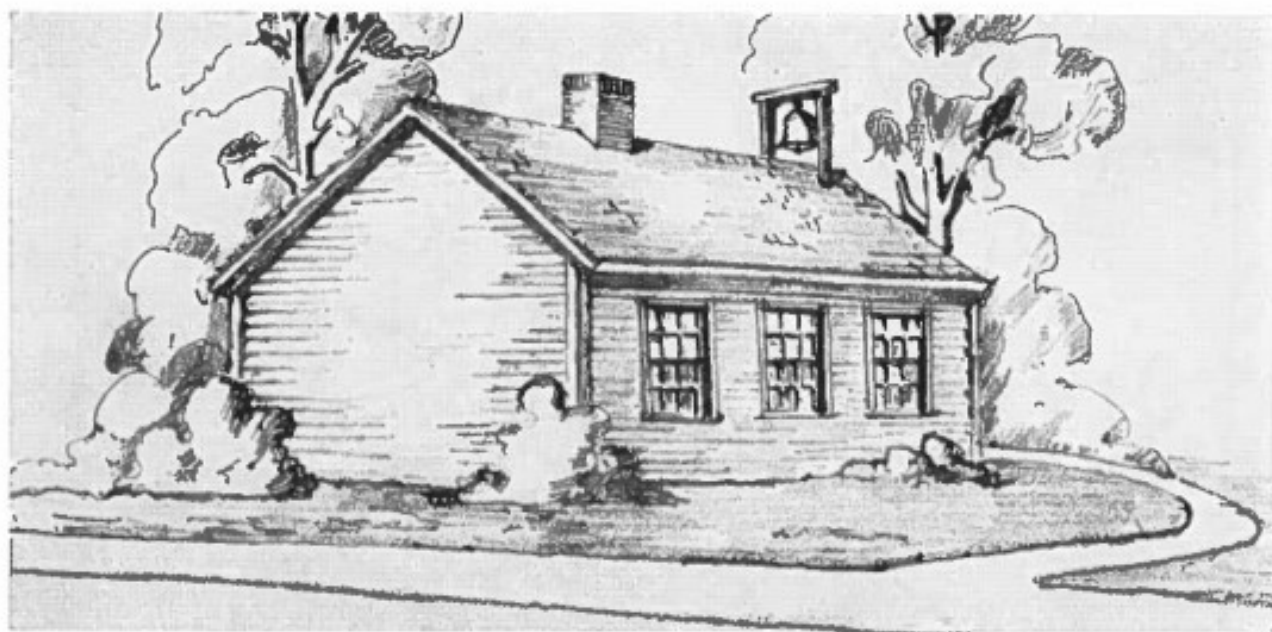
forebears. Only an undying faith and a steadfast devotion to the Church could have brought them triumphantly through the struggles which at times harassed their beloved parish.

Without minimizing the hallowed memory of our ancestors, we must say that the same spirit animates the present congregation. Like their illustrious predecessors, the people of St. Mary's are close to their Church. Well known is their devotion to their priests. Their spirit of faith, their loyalty, cooperation and generosity is evidenced by their keen interest in matters parochial.

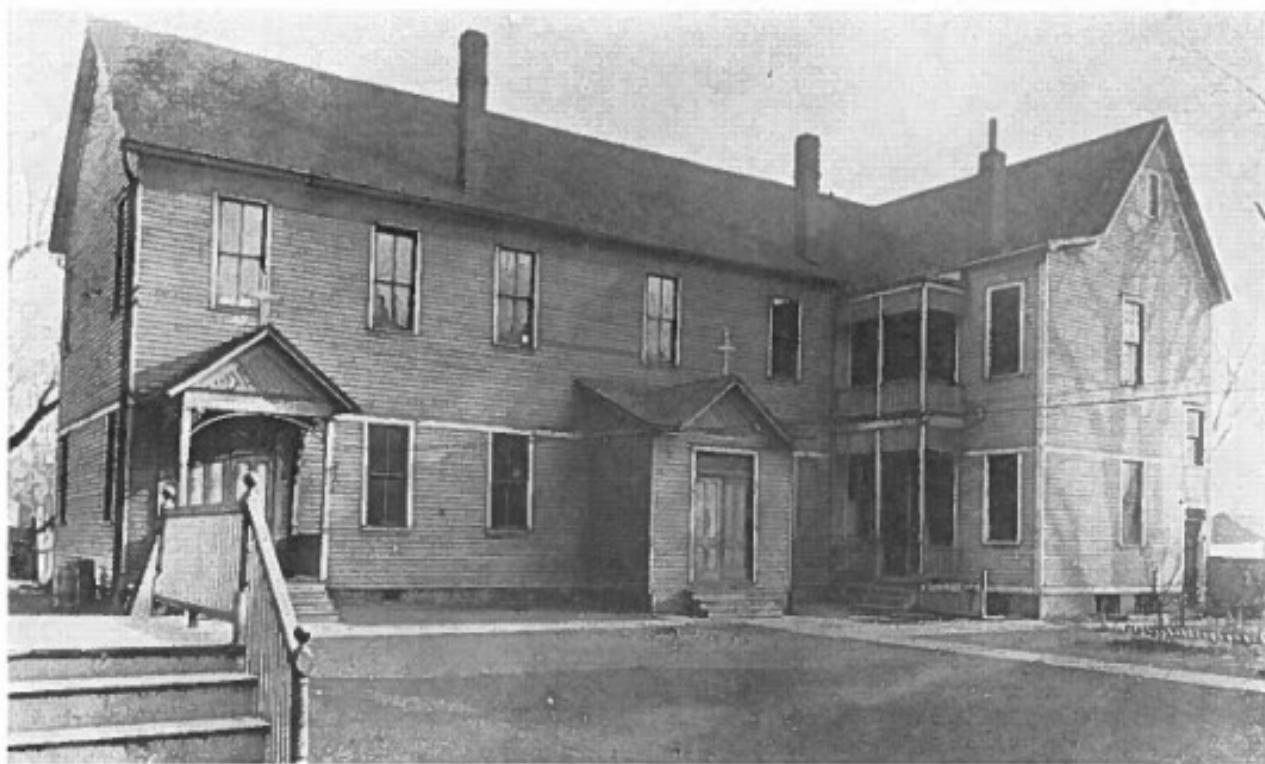
Our prayer today is that Almighty God will continue to shower His richest blessings on the priests and faithful of St. Mary's parish.







Sketch of First School—1867



Second School Building Erected 1899



# OUR SCHOOL

**C**ATHOLIC parochial education began in Centralia in 1867 when the first Catholic School, a frame building, was built through the efforts of Father Thomas Walsh. The original school was under the care of lay teachers.

The first Sisters took over the teaching in our school in 1889. The first three Sisters, Poor Handmaids of Jesus Christ, who came to Centralia were the following: Sister M. Henrica who served as superior; Sister M. Gregory, a teacher, and Sister M. Leonilla, a Sister who did private nursing.

When the Sisters took charge of the school it was a one room frame building occupying the site of the present Church. In 1893 another classroom was added to the school, and a second teacher was added to the staff, Sister M. Adelheide.

In 1899 a new school was erected. It was a two story structure, situated to the rear of the present rectory. In 1907 an addition was made to the school, and facilities by this time included four classrooms and a large assembly room which was also used for social gatherings. The Sisters who

taught in our school at this time were: Sisters Borgia, Rigorberta, Clementine and Claudia.

During the pastorate of Father George Lohman plans for a new school were formulated. In 1927, under his supervision the present modern school was erected for approximately sixty thousand dollars. The school today contains six classrooms on the second floor; the first floor level is occupied by modern kitchen facilities and a parish hall.

Until 1939 the Poor Handmaids of Jesus Christ had charge of the school. In that year the operation of the school was transferred to the Felician Sisters who also assumed charge of the administration of St. Mary's Hospital. The first teachers of the new community in our midst were: Sister M. Leonella, Sister M. Polycarp, Sister M. Theodora and Sister M. Cordia. The Sisters who presently staff our school are Sister M. Louise, Sister M. Vitalia, Sister M. Adelma, Sister M. Alphonsetta and Mrs. Hazel Hamm. The enrollment of St. Mary's School, which is currently increasing, has always fluctuated around the two hundred mark. This year there are 219 pupils enrolled at St. Mary's.



Present St. Mary's School Built in 1927

# VOCATIONS

**V**OCATIONS to the priesthood and religious life are a sign of a vigorous Catholic life in a parish. During the past one hundred years God has extended His choicest blessings to native sons and daughters. Nine girls from St. Mary's have given their lives to God as Sisters. They are Caroline Garnier, Sophie Garnier, Theresa Atkinson, Clara Klein, Mary Till-

man, Frances Brueggemann, Helen Feldhake, Margaret Addison. Three young men have been ordained to the priesthood, namely Fathers Robert R. Boyle, S. J., Joseph C. Hays and Thomas W. Parrott, C. M.; Mr. Richard Pollock has become a Precious Blood Brother. Currently there are four young men in seminaries preparing themselves for the priesthood.

## Sons of the Parish



Rev. Robert R. Boyle  
Society of Jesus  
Ordained 1950



Rev. Thomas W. Parrott  
Congregation of Missions  
Ordained 1950



Rev. Joseph C. Hays  
Ordained 1951

### Seminarians from the Parish

Joe Altadonna

Stephan Schwartz



Brother Camillus Pollock,  
Congregation of the Adorers  
of the Most Precious Blood  
Presently Stationed in  
Rome, Italy

### Seminarians from the Parish

David Walsh

Edward Walsh



Sister Berthulda Garnier  
Poor Handmaid  
Professed in 1894



Sister Amelia Garnier  
Poor Handmaid  
Professed in 1894



Sister Dolores Atkinson  
Poor Handmaid  
Professed in 1913



Sister Antonella Tillman  
Poor Handmaid  
Professed in 1914



Sister Godoleva Klein  
Poor Handmaid  
Professed in 1915



Sister Mary Paul Foley  
Ursuline  
Professed in 1916



Sister Stephen Brueggemann  
Poor Handmaid  
Professed in 1949



Sister Antonette Feldhake  
Dominican  
Professed in 1952



Sister Raineldis Addison  
Felician  
Professed in 1953



First St. Mary's Hospital Erected 1909  
Additions Made in 1911 and 1922

## St. Mary's Hospital

**T**HE Catholic Church has always subscribed to the adage that a sound mind lives in a healthy body. Realizing that man is composed of a body as well as a soul, the Church has never neglected the material part of man. She has always been anxious to provide institutions which provide care for God's afflicted children.

This same realization accompanied the Catholics to Centralia. It soon became evident that the city of Centralia, its population swelled by the coming of the railroad, industry and mining, stood in need of some provisions to care for the needs of the sick and infirm. The necessity of a hospital within its limits became apparent.

In March, 1905, during the pastorate of Father Bruns, St. Mary's parish

purchased a plot of ground at the corner of Elm and Noleman Streets for a hospital. The Business Men's association set about soliciting funds for the project. However, since the necessary support was lacking, the idea of a hospital was temporarily set aside.

In 1908 the hospital project was again revived. A new subscription list was circulated by a special committee composed of the following: L. M. Bostwick, president; Dr. W. A. Stoker, Vice President; Father John Bruns, Treasurer; Dwight F. Haussler, secretary; E. A. Tartman, Dr. J. W. Armstrong, and Dr. Otto Diehl. The cornerstone was laid in 1909. When completed, the hospital was a two story structure with a bed capacity of twenty-two. The hospital was solemnly dedicated on



Thanksgiving Day, 1909, by the late Bishop Janssen, Bishop of Belleville.

The original hospital soon became too small for the needs of a growing community. In 1911 a thirteen bed wing was added, and in 1922 during the pastorate of Father Chuse and Father Eschmann, another wing was added bringing the total bed capacity to 86.

During these years, the hospital was owned by the Diocese of Belleville. It was staffed by the Poor Handmaids of Jesus Christ until 1939, when Bishop Henry Althoff requested the Felician Sisters to assume operation of the hospital. On August 27, 1947, ownership of St. Mary's Hospital was transferred from the Diocese of Belleville to the Felician Sisters.

From the beginning the spiritual needs of the hospital were looked after by the priests of the parish. In order to give more efficient spiritual care to both the patients and the Sisters, Father Edward J. Ratermann was appointed the first resident chaplain in June, 1955, by the Most Reverend Bishop, at the request of the Sisters.

Increasing difficulties in providing the best medical care for the community with the present facilities, made a new hospital imperative. Thus, with the hope that they could some day build a new modern hospital in Centralia, the

Sisters purchased, in 1948, a twenty acre site on the west side of Pleasant Avenue, between Rexford and McCord Streets. The Sisters asked the people of our community to contribute \$250,000.00 toward the \$3,000,000.00 hospital as a token of their good will. A financial drive was initiated, and the interest of the citizens was reflected in their response to the project.

The groundbreaking ceremony took place on November 21, 1955. The first spade of earth was turned by the coordinated efforts of His Excellency, Bishop Albert R. Zuroweste, Bishop of Belleville, the Honorable Herbert Blanchard, Mayor of Centralia, and Sister Mary Paschalisa, Administrator of the hospital. The construction of the hospital began in February of the following year. The cornerstone was laid by the chaplain, Father Ratermann, on September 12, 1956.

The new St. Mary's Hospital, constructed of brick and stone, features the most modern and efficient facilities and equipment demanded by present-day medical and surgical care. It will be air-conditioned throughout. Capacity of the hospital is 100 beds and 20 bassinets. Progress on the new hospital is steady, and the city of Centralia can look forward to enjoying its benefits sometime late this year.



New St. Mary's Hospital—1957

Corner of North Pleasant and McCord

To Be Dedicated Late This Year

# ALTAR SOCIETY

**T**HE Altar Society is one of the oldest parish societies, dating back beyond the memory of any living parishioner.

The primary work of the organization consists in providing for the needs and furnishings of the altar. However, the society is always prepared to share in other parochial activities. In recent years it has made substantial financial contributions toward the new St. Mary's Hospital, toward the renovation of our Church, toward a new set of vestments, and toward the recent

project or renovating and rebuilding the Church organ.

The Society is the result of a merger of the original society with the St. Ann's Guild. The two organizations were consolidated during the pastorate of Father George Lohman.

The present officers are:

Mrs. Ira Garnier, Sr., President

Mrs. Harvey Thomas, Vice Pres.

Mrs. Al Sheid, Secretary

Mrs. Frank Wehrle, Treasurer

There are more than two hundred members in the society today.




Altar Society





## Catholic Daughters of America

 COURT of St. Theresa No. 788, Catholic Daughters of America was established in St. Mary's Parish in 1923, with fifty-three charter members. Today the court counts 181 members of an organization listing more than 206,000 members.

During the court's 34 year history in Centralia, it has contributed heavily to the religious and social affairs of the community. It has conducted study clubs, days of recollection, donated financially to Church, school, and hospital, and has taken an interest in educating young men for the priesthood.

A singular honor came to the court in 1938 when Mrs. J. T. Boyle, a charter

member, was elected State Regent of the State of Illinois.

In 1940, the court organized the junior Catholic Daughters, whose three-fold program of spiritual, charitable and recreational activities aims to stimulate Catholic ideals, to encourage the habit of serving others, and of providing wholesome recreation under Catholic leadership.

The Court has two members who entered the religious life as nuns.

The first Grand Regent was Miss Theresa Dieckman, and the present Grand Regent is Miss Mercedes Campbell.



## Knights of Columbus

**M**ORE than fifty years ago the Catholic men of Centralia initiated the process of establishing Knights of Columbus Council in their own city. Their dream became a reality when a charter was granted for a local council on July 9, 1905.

From that time until the present, the record of the Centralia Council 1025 has been an enviable one. True to the ideals of the Knights of Columbus, Council 1025 has always manifested its love for the poor and afflicted. Youth and Christian education have always been close to the heart of the organization. Their interest and generous support of their parish ranks high with

their many and diverse achievements.

Like most worthwhile projects, the Knights of Columbus too had their years of trial and difficulty. It took time to become firmly established and fully integrated into the community. But the years witnessed their growth and progress. From an original charter membership of fifty-five members, Council 1025 has grown until today it embraces approximately 300 members.

Since 1950 the local Council has its own Home in Centralia. Purchased for \$25,000.00 the Knights' Home with its modern furnishings and facilities indicates the great strides made by the local council since their beginning in 1905.

### Charter Officers

Rev. J. H. Bruns  
James E. Reilley  
F. A. Traynor  
F. Meagher  
Michael Lordan  
H. E. Meagher  
F. A. Schultz  
H. J. Thompson  
John Dagenhart  
Philip Thouvenin  
Chas. Hagerty  
Chas. Collins  
Wm. Lonnergan  
T. D. Riordan  
John Reilley

Chaplain  
Grand Knight  
Dep. Grand Knight  
Chancellor  
Recorder  
Financial Sec.  
Treasurer  
Lecturer  
Advocate  
Warden  
Inside Guard  
Outside Guard  
Trustee  
Trustee  
Trustee

### Present Officers

Rev. A. B. Schomaker  
Carl Huff  
Robert Langenfeld  
Edgar Erbes  
Richard Bieser  
Al Profancik  
Ira J. Garnier, Sr.  
Al Guizzetti  
Edward Bost  
Leo Isaak  
Peter Donnelly  
Mace Fairchild  
William Remacle  
Louis Logullo  
C. M. Broughton



Altar Boys



Centennial Graduating Class of 1957

# Centennial Grade School Children



**First Grade**



**Second and Third Grades**

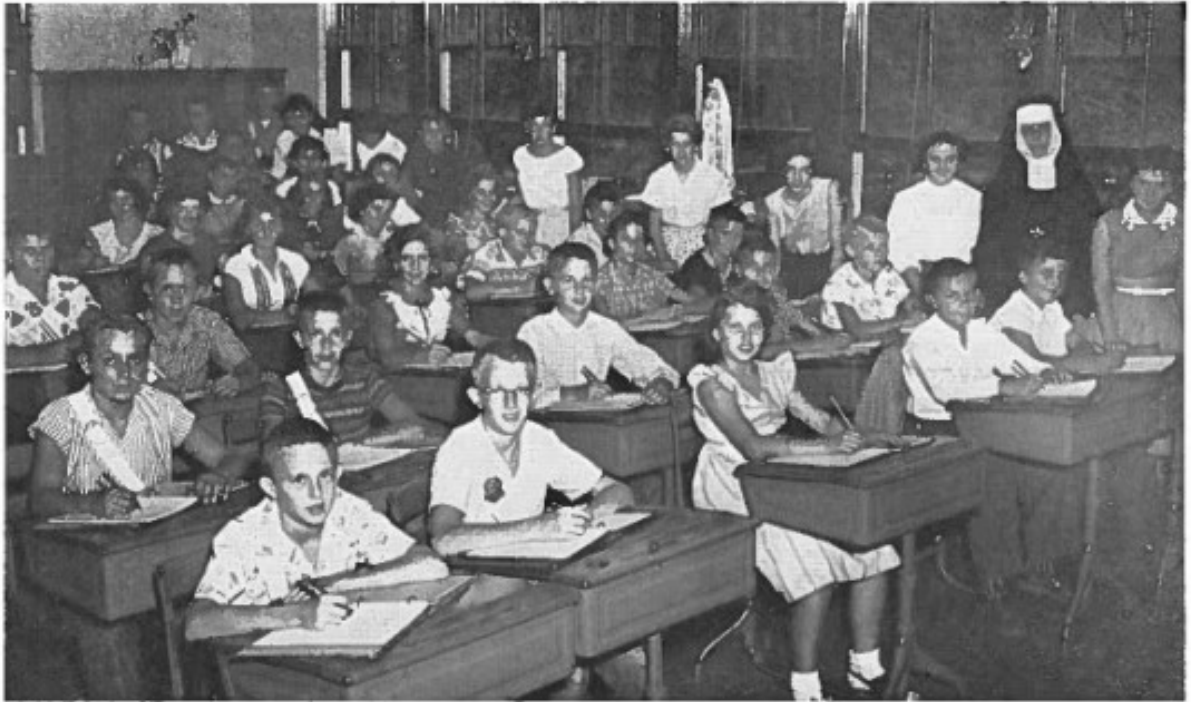




Third and Fourth Grades



Fifth and Sixth Grades



Seventh and Eighth Grades



### HISTORY OF FELICIAN SISTERS

The Congregation of St. Felix was founded by Mother Mary Angela Truskowska in Warsaw, Poland, in 1855. From this ancient city five Felicians came to the United States in 1874.

The Sisters of St. Felix devote their lives to the service of God and His Church through the education of youth,

nursing, care of the aged and orphans, catechizing of public school children, social and domestic work.

In the United States alone there are today almost four thousand Felician Sisters. There are more than 250 educational and charitable establishments under their care.







## Boy Scouts, Explorers and Cubs

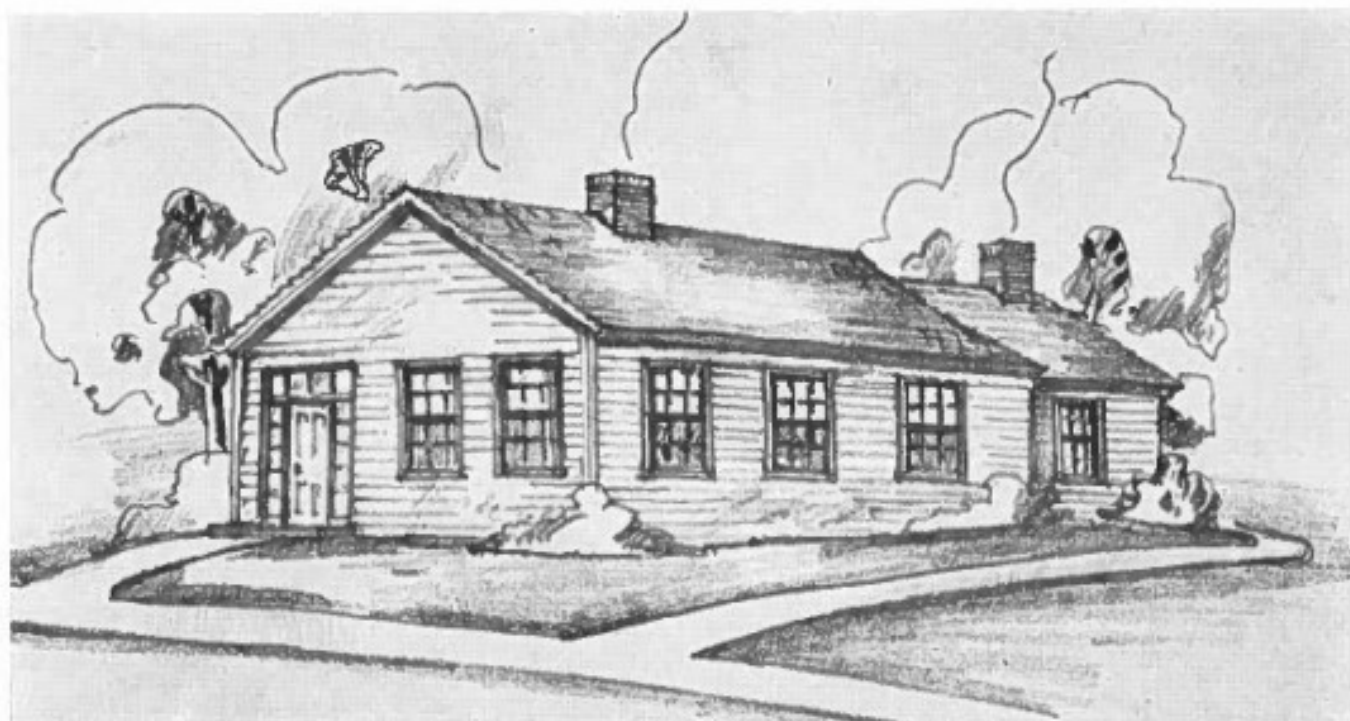
Scouting was organized at St. Mary's parish in 1940. Today some 60 boys participate in the program. To be credited for starting the program are the following: Bert Lynn, Scoutmaster; C. M. Broughton, Troop Committee Chairman; Phil Capelupo, Clarence Zahner, Earl Waggoner and Pete Curley, Committee Members.



## Brownie and Girl Scout Troops

The Girl Scouts were introduced at St. Mary's in May, 1949. Today fifty-six girls are active in Girl Scouting. There are two Girl Scout Troops, and three troops of Brownies.

# ST. MARY'S RECTORY



Sketch of First Rectory



Present Rectory

The first Catholic priests' home was built in 1863 during the pastorate of Father Vahey. It was sold in 1901 when Father Otto Meier erected the present rectory. Father John Bruns added to the original structure in 1912, as did Father Fix in more recent years. During the pastorate of Father Halbig the entire interior of the building was renovated and re-decorated.

